



BTS & TM@S News Extra

The Trolleybus Museum at Sandtoft—An exciting future

Following a recent joint meeting of the directors of TM@S (The Sandtoft Transport Centre Ltd) and the committee of the British Trolleybus Society, both bodies are celebrating the historic agreement made to implement the recommendations of *“Strategies for the Development of the Trolleybus Museum at Sandtoft”*, the report of the Joint Working Group, with members drawn from both organisations. The result will be to create a vastly improved visitor experience with accessibility and inclusivity a central consideration in the plan which makes use of the whole site. In addition to the existing museum, it will incorporate land recently purchased by TM@S and the site owned by the British Trolleybus Society known as “Burntwood”. This will increase the total size of the museum from 5.5 acres to 8 acres. A planning application is being prepared but members will start to see changes before long with work commencing that does not require planning consent.



The Main Developments

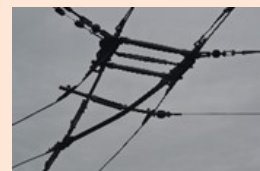


Arriving at the Trolleybus Museum

The Museum will have a completely new main entrance leading to a new car park at the western side of the site. Visitors will then enter and exit through a new combined reception and shop

Trolleybus Operation

The trolleybus line will be extended with a one-way single-line clockwise loop leading from the northern end of Sandtoft Square via the workshop road then a new road to take it to link up with the existing back straight, giving a long continuous run from the north to the south of the site. A new powered line will be provided for the operation of the Cedes-Stoll replica.



Exhibitions and History

Two new exhibition halls will be constructed. One will house the Cedes-Stoll replica and a permanent exhibition called “The Birth of the Trolleybus” and in the longer-term a spacious new building will house a selection of trolleybuses which tell the story of the trolley vehicle in the UK. Local interest in agricultural machinery will be reflected with the provision of a tractor showroom.

The Main Developments (continued)

Families



We need to meet the needs of not just trolleybus enthusiasts but their families and of local families. A narrow-gauge railway will be constructed as an exciting additional attraction running through the site from the south. Known as the *Sandtoft District Railway*, it will utilise rolling stock and track from the former *Ise Valley Railway*. The existing play area will move to a new location and a new building nearby will house the family room giving families a safe and secure facility all in one area. The photograph shows the existing play area with some temporary track laid to check

the space required for curves. Kieran Proctor has been appointed Sandtoft District Railway Project Manager and will work with Graham Bilbé as the Railway Project Engineer and Professor Francis Terry as Consulting Engineer. The team is now working on a planning application and a strategy for building the railway.

New Background Operations Areas



A new restoration workshop will supplement the existing facility and will permit major restoration projects to be undertaken at the Museum. (The photograph shows London 1812 at an early stage of restoration.

Photo © Bob Ashton)

New archive facilities will provide for the proper storage of paper and photographic archives and in future it will be a research centre.

THE WAY FORWARD

All this will take a huge amount of money, possibly as much as £2 million, and the full development will take up to 10 years although some parts will start very soon. The working group has researched funding bodies including the National Lottery Heritage Fund and has formulated a strategy to seek funds - initially for smaller projects to build funders' confidence in the Museum's ability to deliver. It is also planned to open the Museum more often in future years.

This will enhance the Museum's status as the world's pre-eminent trolleybus museum and make it more financially resilient by increasing visitor numbers as well as involving younger people to ensure the Museum's long-term future.

When the Chairmen were asked for comment, BTS Chairman Dave Chick said, *"This is a huge project but we have the skills within our organisations to make a success of it. I am looking forward to the BTS and the Trolleybus Museum working together to create an even more special place for our visitors and for all of us as volunteers."*

Ian Wilson, Chairman of the Trolleybus Museum at Sandtoft said *"When the plans come to fruition, we will be able to offer a much-improved visitor experience particularly during inclement weather. However, this cannot happen without buy-in from our members and I would like to encourage you all to come and give us a hand"*.

These are only the headlines of the exciting plans for the future of the museum; more details will be set out in the November editions of *Trolleybus* and *Sandtoft Scene*. Please share this news with any members who do not have access to email and maybe print out a copy for them.